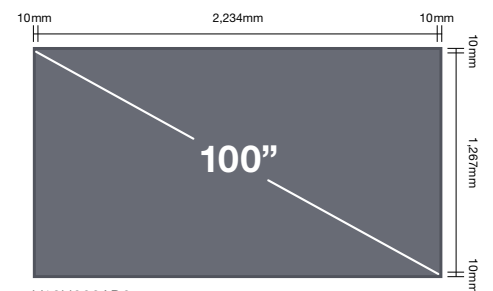


# BIG SCREEN, LASER-LIKE ENTERTAINMENT EXPERIENCE.



Power up your viewing possibilities with the new and performance-driven Epson ELPSC35! Enjoy 4K PRO-UHD contents on this modern and easy to set up home projector screen, bringing you a cinematic experience right at home. Delivering vivid, lifelike videos to you thanks to the built-in ambience light rejecting ability, you can now enjoy better contrasts and deeper blacks for your viewing pleasure. Get the best visual performance of your movies in detail with the Epson ELPSC35 today!

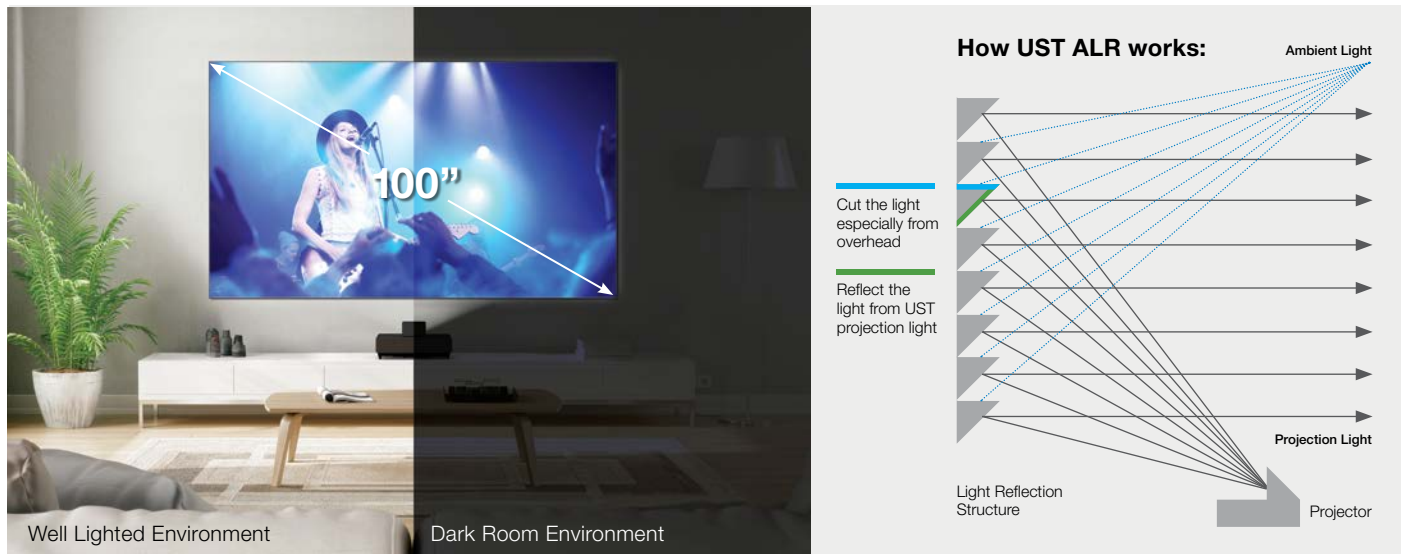


**IT'S IN THE DETAILS.**

## UST Ambient Light Rejection (ALR)\*

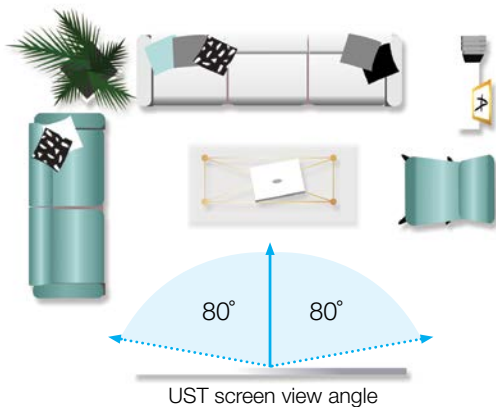
The screen optical surface filters out ambient light by 90%, especially from the overhead ambient lighting. As a result, optimal brightness can be achieved in both a well lighted & dark room environment, giving viewers a Laser TV like viewing experience.

\* ALR UST screen only works on ultra-short throw projectors .



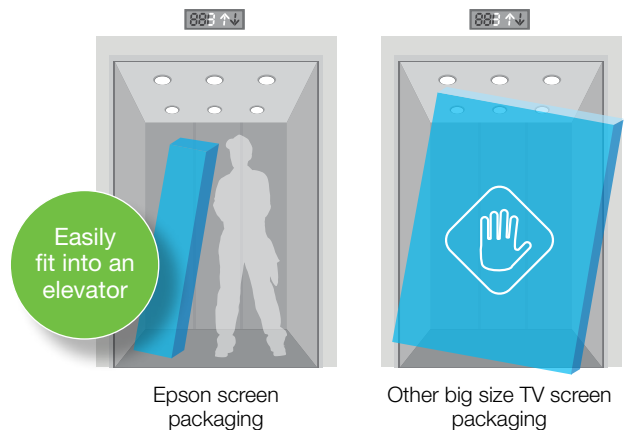
## Wide Viewing Angle

UST ALR screen produces a wider viewing angle comparing to normal screens. It delivers more than 50% brightness within 80° from center, both right and left direction. With a wider viewing angle, it blends seamlessly into any space for various home entertainment pleasure.



## Transportation Flexibility

Transporting the ELPSC35 is much easier comparing to a consumer TV especially in an elevator setting. All thanks to its compact packaging design.



## SPECIFICATIONS

<b>Screen Size</b>	Size	100 inch	<b>Decorative Frame</b>	Material	Aluminium
Model No: V12H002AD0	Aspect	16:9		Colour	Dark Gray
	Image Size (mm)	1,948 x 1,095	<b>Product Dimension</b>	Size (W x H x D)	1,968 x 1,117 x 30 mm
<b>Screen Optical</b>	Gain	0.5	<b>Weight</b>	Product	11 Kg
<b>Specification</b>	Half Gain Angle*	80°		Bundled	14 Kg
	Ambient Light Rejection Value	90%			

\*Keep more than 50% brightness within 160 view angle from center.

©2020 Epson Singapore Pte Ltd. All Rights Reserved. Reproduction in part or in whole, without the written permission from Epson, is strictly prohibited.

EPSON and EXCEED YOUR VISION are registered trademarks of Seiko Epson Corporation.

All other product names and other company names used herein are for identification purposes only and are the trademarks or registered trademarks of their respective owners.

Epson disclaims any and all rights in those marks. Projected images shown herein are simulations. The actual product design and contents may vary. Specifications are subject to change without notice and may vary between countries. Please check with local Epson offices for more information.

Dealer's Stamp

Information correct at time of printing.  
Printed January 2020

Sales Enquiries  
800 120 5564

[f](#) EpsonSEA [@EpsonSEA](#) [@EpsonSEA](#) [@EpsonSEA](#) [YouTube](#) EpsonSoutheastAsia [in](#) Epson Southeast Asia

For latest specifications, visit [www.epson.com.sg/projectors](http://www.epson.com.sg/projectors) or call +65 800 120 5564.

Epson Singapore Pte Ltd 1 Harbourfront Place, #03-02 HarbourFront Tower One, Singapore 098633. Tel: (65) 6586-5500 Fax: (65) 6271-9755

Epson Customer Care Centre 108 Pasir Panjang Road, #04-08 Golden Agri Plaza, Singapore 118535. Epson Helpdesk: 800 120 5564. Operating hours: Monday - Friday, 9am - 6pm, Saturday, 9am - 1pm. Closed on Sunday and Public Holiday.